

# **KIP 75 SERIES**

**INNOVATIVE VERSATILITY**

*Experience the most  
advanced technology in  
technical printing*



**SYSTEM  
SOFTWARE** 



## ADVANCED TECHNOLOGY

***KIP 75 Series Systems  
are the leading  
advanced solutions for  
technical printing  
professionals***



### ***Perfect View***

Adjustable  
12" touchscreen  
for the ideal  
viewing and  
management of  
system features

KIP has expanded the range of the KIP 75 Series Systems to offer innovative productivity and configuration versatility in a space saving design.

The KIP 75 Series Systems have proven reliability delivering high quality, durable prints at a single touch.



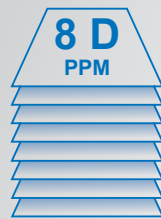
## CONFIGURATION VERSATILITY

### Space Saving Performance

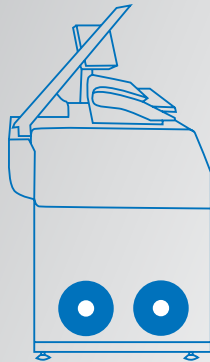
### Near Wall Installation

### Fits Where You Need It

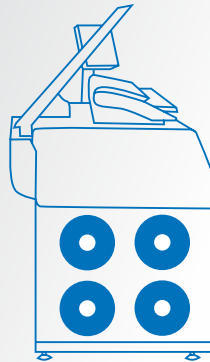
Innovative productivity and configuration versatility expands the range of the KIP 75 Series systems to meet the needs of technical printing professionals.



480 PRINTS PER HOUR



**KIP 7582 MFP  
CIS Scanner**



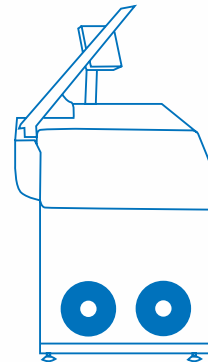
**KIP 7584 MFP  
CIS Scanner**

### KIP 75 SERIES

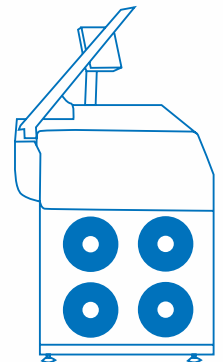
*Range of Productivity & Configuration*



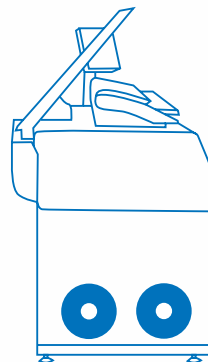
600 PRINTS PER HOUR



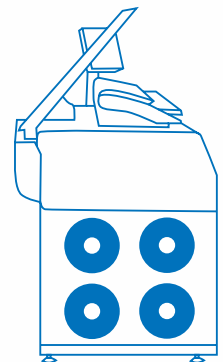
**KIP 7572 Printer**



**KIP 7574 Printer**



**KIP 7582 MFP  
CIS Scanner**



**KIP 7584 MFP  
CIS Scanner**

## KIP 75 SERIES TOUCHSCREEN

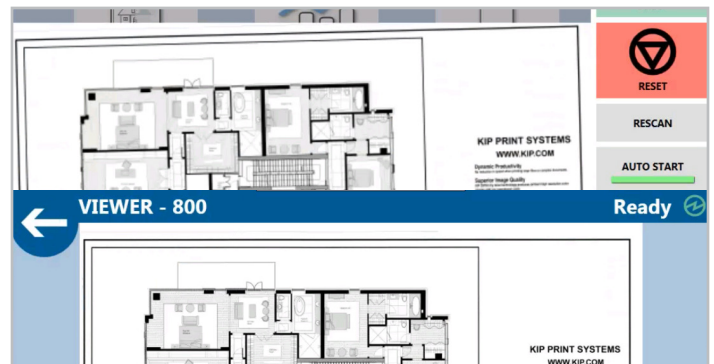
### *Print, Copy and Scan Brilliantly*

The KIP touchscreen has smart tablet functions that offer unmatched, easy, and intuitive features to brilliantly automate Print, Copy, and Scan workflow. Preview vivid real-time color images, and use KIP's 8-point Area of Interest for simplified on-screen image editing. Auto de-skew technology ensures the perfect scan or copy to enhance quality and improve workflow. Use the power of KIP Cloud Connect for project collaboration anytime, anywhere.

- 12" Smart-tablet simplicity
- Intuitive feature selection
- Vivid color image preview
- Cloud Connect
- Auto De-skew for copy and scan
- Area of Interest image editing
- Workflow automation templates
- One-touch access to features in 12 languages
- Pictorial feature guide
- Touchscreen articulates for the Perfect View



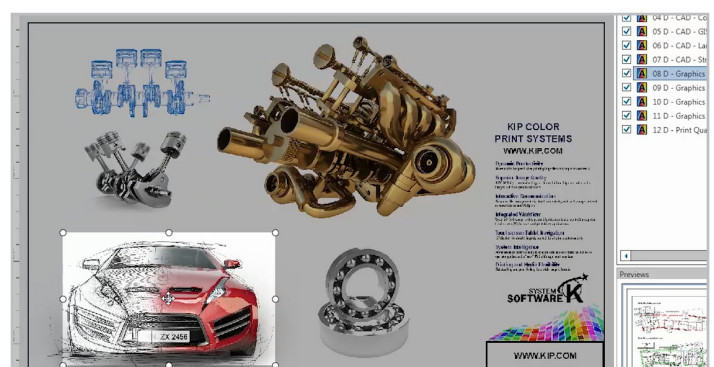
Smart Tablet Simplicity 12" Ultimate Color Display to Copy, Print and Scan with Vivid Color Image Previews and Intuitive Feature Selection for Easy Operation



Auto Deskew Image



Cloud Connect



Area of Interest



## KIP 75 SERIES SOFTWARE APPLICATIONS

# KIP IMAGEPRO One Application for all Wide Format Imaging

- Feature Rich Tool Selection
- High Definition Viewer
- Thumbnail Preview
- Quick Access Tool Bar
- Workflow Automation Templates
- Area of Interest
- Image Clean-up
- Easy Scanned File Renaming
- Secure Print

### KIP Windows Driver

WHQL Certified

### KIP AutoCAD Driver

Certified integrated printing from Autodesk

### Printer Status SNMP

Anywhere, anytime centralized updates

**KIP Accounting\*** – Turn printing into revenue. KIP Accounting consolidates control of user account data and printing rules for all imaging functions.

**KIP Cost Center\*** – Automatically generates visually attractive production reports for user, project and department level accounting data.

**KIP Card Reader System\*** – Secures KIP systems using contactless card reading technology for copy, print and scan functions for workgroups.

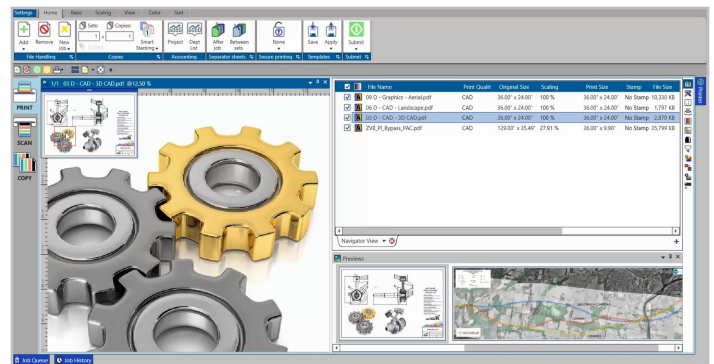


### KIP Digital Data Security Features

Proven to meet  
Department of  
Defense specifications.  
Data Encryption  
and Virus Scanning  
compatible.



Exceptional Value - Unmatched Feature Performance  
Included with KIP 75 Series Systems



High Definition Viewer

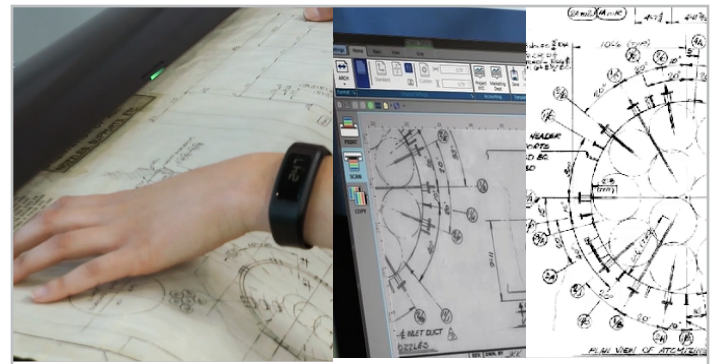
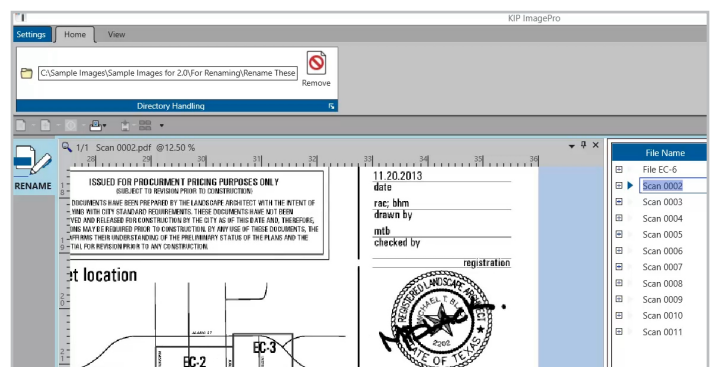


Image Clean Up  
Before & After



Scanned File Renaming

*\*Optional*

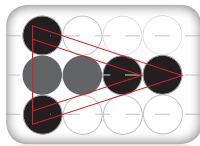
## KIP 75 SERIES EXCLUSIVE TECHNOLOGIES

### High Definition Print (HDP) Technology

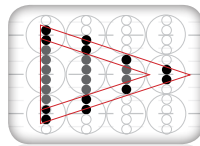
KIP HDP is a green technology that is 100% toner efficient, reducing the cost of printing and returning outstanding value and industry leading low cost of ownership. KIP Systems do not employ carriers, developers or waste receptacles that require disposal and replacement.

### 600 x 2400 dpi – High Resolution

KIP Systems feature crisp, 600 x 2400 dpi printing for sharper details and extremely smooth grayscale. This higher resolution allows the system to enhance curves, diagonal lines and arcs by smoothing out line edges with excellent precision.



600 dpi x 600 dpi



600 dpi x 2400 dpi

### Consistent Print Quality

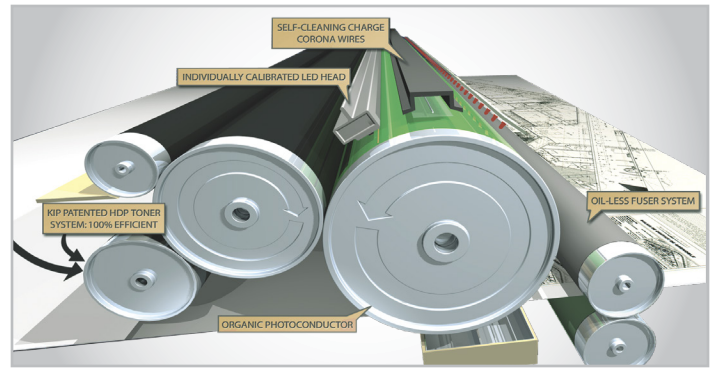
KIP Systems deliver solid blacks, smooth grayscale and uniform print quality from the first to the last page of a print job. Advanced technologies including automatic environmental adjustments and contact-based developer units keep your print quality on track through seasonal climate changes.

### Media Capacity

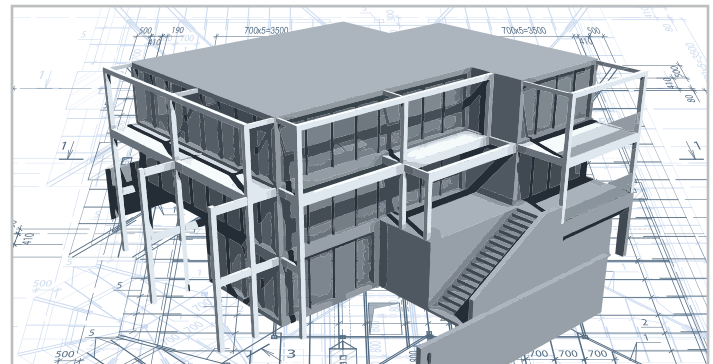
KIP Systems feature a user friendly “End Cap” design for easy loading of media rolls. Media drawers are auto-switching to ensure non-stop print production and maximum media versatility. View media status on the touchscreen.

### KIP Scanning Technology

KIP color scanning solutions offer large format CIS technology for quick scanning convenience or CCD high productivity scanning. The 2300 CCD scanner delivers world-class speed and quality with workflow flexibility. Scan originals face up or face down as well as thick mounted originals up to .6 inches. KIP ImagePro offers scanned image clean-up and easy file renaming that saves time and enhances workflow efficiency.



100% toner efficiency  
Low cost of operation



Highest image durability



End caps for easy  
changing of media rolls



CIS



CCD



## KIP 75 SERIES INTEGRATED FINISHING

### **Document Automation**

KIP integrated folding and finishing systems automate wide-format document finishing by providing folding, stacking and collation in a compact design.

KIP online stackers & folders intelligently communicate with KIP printers and are fully integrated with KIP software applications & print drivers to provide seamless workflow integration.

### **KIPFold 2800**

The KIPFold 2800 system automates wide-format document folding requirements by providing folding, stacking and collation in a compact design with quiet operation.



KIP 1200 Stacker



KIPFold 2800





# KIP 75 SERIES

## SPECIFICATIONS



### General

Description	Monochrome wide format print/copy/scan with color scanner
Type	Electrophotography (LED) with organic photoconductor (OPC) and closed toner system
Range of Productivity	10 D or 8 D per minute / 600 or 480 prints per hour
Warm Up Time (from cold)	Less than 2 minutes from standby
Configurations	Printer / MFP
Roll Options	2 Roll or 4 Roll
Output Delivery	Top / Optional Rear
Dimensions	63" (w) x 29" (d) x 63" (h) / 1600 mm x 720 mm x 1600 mm
Weight	MFP (4 Roll) 624 lb. / 283 kg   Printer (4 Roll) 587 lb. / 266 kg
Electrical Requirements	220V-240V +6% or -10%, 50/60Hz, 13A
Power Consumption (Standby)	430W
Power Consumption (Printing)	< 1,500W

### Printer

Print Resolution	600 dpi x 2400 dpi
Roll Capacity	2 Roll or 4 Roll
Output Sizes Width	11" - 36"
Output Sizes Length	20' / 6 m (standard), 500'/150 m based on media validation
Paper Weight	Bond 18-24 lb., Vellum/Translucent Bond 18-20 lb., film 3.5 - 4 mil
Media Type	Bond / Vellum / Film

### Controller

Controller Type	KIP System K Controller with Windows 10 Embedded
Memory	2GB DDR3 Standard - Upgradable to 4 GB
Hard Drive	Minimum 320 GB - Unlimited Upgrade
Supported File Type	DWF, PDF, PDF-A, HPGL 1/2, HP-RTL, Calcomp 906/907, CALS Group 4, TIFF Group 4, CIT/TG4, Grayscale TIFF, TIFF Packbits, PNG, JPEG

### Scanner

Scanner Type	CIS / CCD
Scan Resolution	600 dpi
Scan Format	TIFF, Multipage TIFF, PDF, PDF-A, Multipage PDF, DWF, JPEG
Scan Destination	Local USB (removable media), Mailboxes (local), FTP, SMB Cloud: Google Drive/Dropbox/Box/OneDrive/SharePoint
Original Size Width	11" - 36" / 210 mm to 914 mm
Original Thickness	0.05 mm - 1.60 mm (image quality over 0.25 mm not guaranteed)

[WWW.KIP.COM](http://WWW.KIP.COM) | 800.252.6793